

## 3 Alignments and Adjustments

This section of the service manual explains how to use the DDC MANAGER JIG.  
This function is needed for AD board change and program memory (IC201) change.


### 3-1 Required Equipment

The following equipment is necessary for adjusting the monitor:

- Computer with Windows 95, Windows 98, Windows 2000, Windows XP or Windows NT.
- MTI-2055, 2058, or 2059 DDC MANAGER JIG

### 3-2 Automatic Color Adjustment

To input video, use 16 gray or any pattern using black and white.

1. Select english for OSD language.
2. Press the "  (Enter/Source)" key for 5 seconds.

### 3-3 DDC EDID Data Input

1. Input DDC EDID data when replacing AD PCB.
2. Receive/Download the proper DDC file for the model from HQ quality control department.  
Install the below jig (Figure 1) and enter the data.

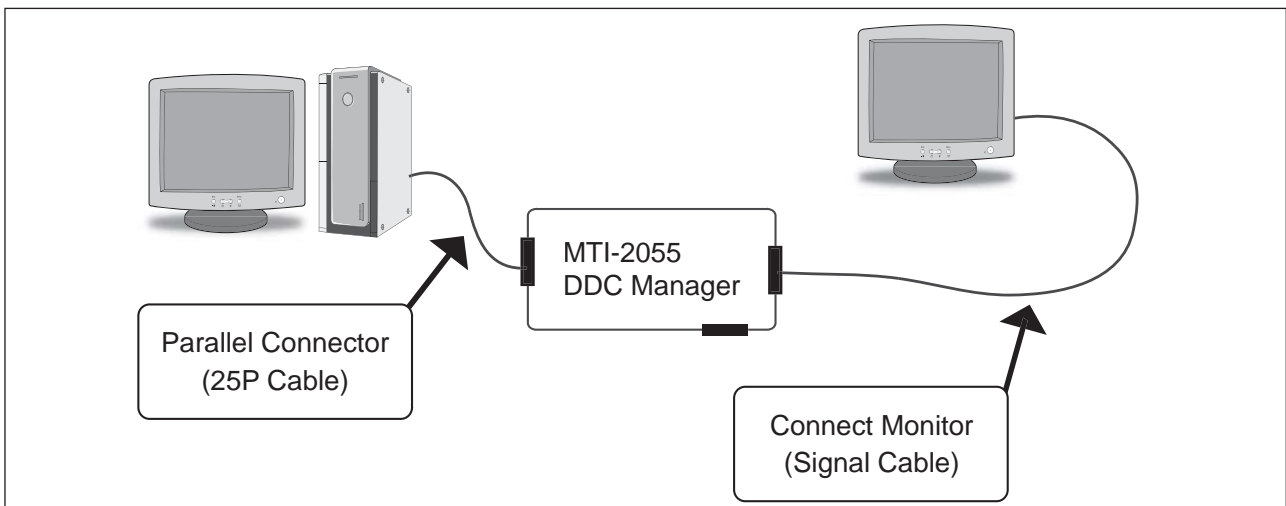



Figure 1.

### 3-4 OSD Adjustment When Replacing Panel

1. Adjust brightness and contrast to 0. Then, press the  (Enter/Source) key for 5 second.  
Service function OSD will appear on screen.
2. Press the + key to place the cursor on the panel. Press the menu key for 5 seconds.


### 3-5 OSD Adjustment When Replacing Lamp Only

1. Adjust brightness and contrast to 0. Then, press the exit key for 5 seconds.  
Service function OSD will appear on the screen.
2. Press the + key. Select upper lamp and press the menu key for 5 seconds.  
Then, select lower lamp and press the menu key for 5 seconds.

**Note :** Please be sure to read the following instructions for details on service function.

## 3-6 Service Function Spec.

### 3-6-1 How to Display Service Function OSD

1. The value for brightness and contrast should be changed to zero.
2. Within 5 seconds, press the  (Enter/Source) key.
3. Service function OSD will be displayed.

-If you want to disable the service function OSD, you will have to power off.

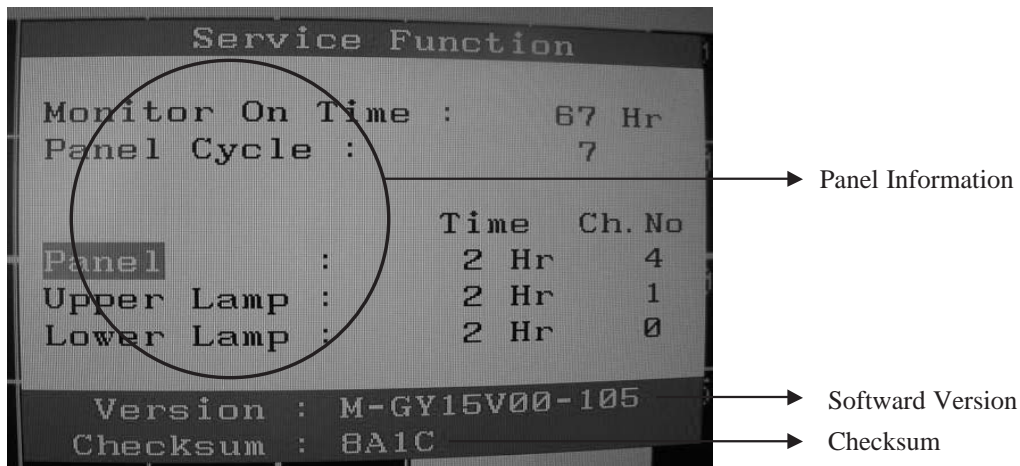


Figure 2. The example of service function OSD

The service function OSD is based on a grid of 29 columns x 12 rows.

The service function OSD consists of panel information, software version and MICOM checksum.

### 3-6-2 How to Control Service Function OSD

1. With the panel selected on OSD, whenever you press the right key, the base color will change to blue from "Panel" to "Upper Lamp", "Lower Lamp".

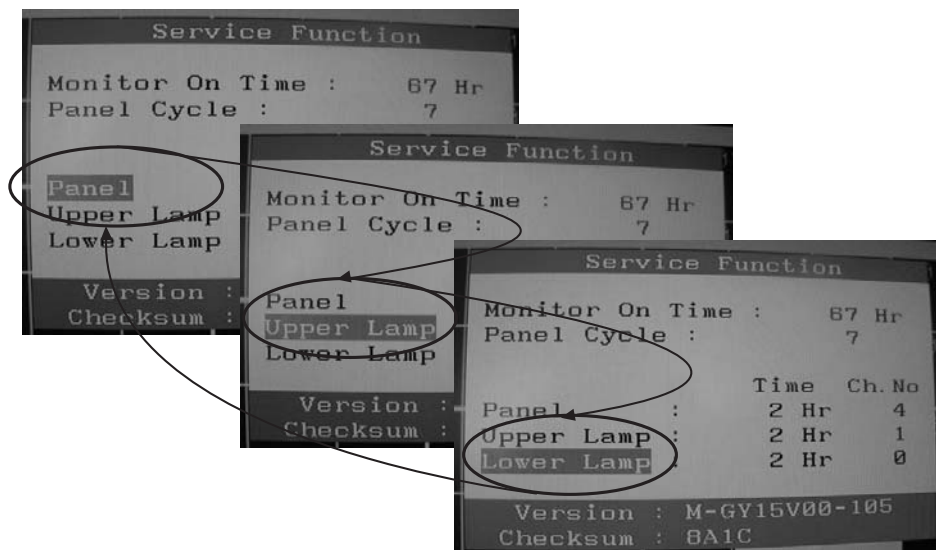


Figure 3.

### 3-6-3 How to Control Service Function OSD

**-After change the panel or lamp, you must reset service function OSD.**

**-The case of panel change**

After changing the panel, press the menu key within 5 seconds,.

Then, panel Ch. No increases one step and the panel time information is reset to zero.

Simultaneously, other information is reset to zero (Upper/Lower lamp, Panel cycle).

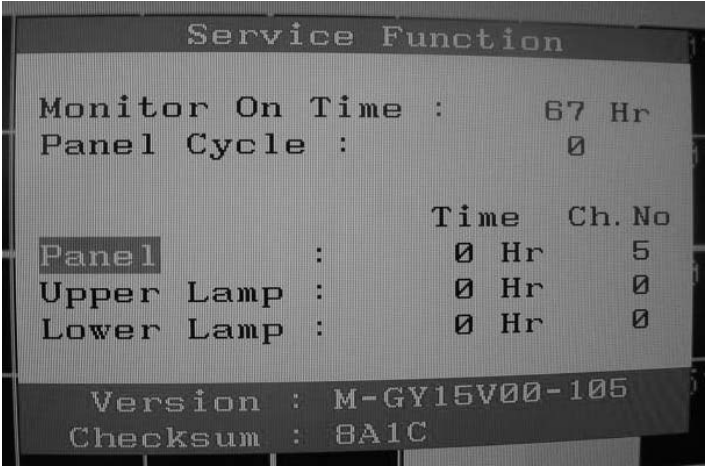


Figure 4.

### 3-6-4 How to Control Service Function OSD

**-In the case of Upper Lamp or Lower Lamp change**

After changing the Upper Lamp or Lower Lamp,

1. Select the Upper Lamp or Lower Lamp
2. Press the Menu key within an 5 seconds.

Then, Ch. No and time will be reset to zero (selected item only).

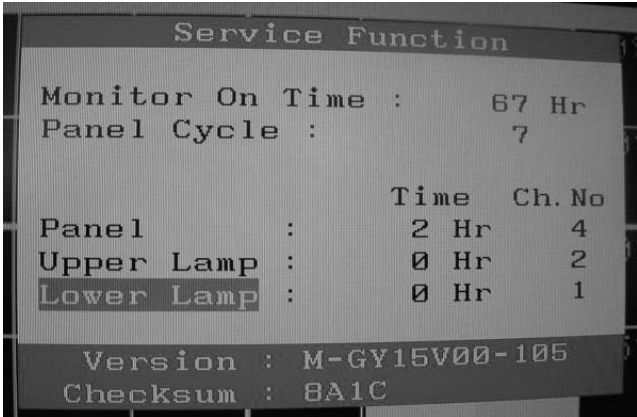
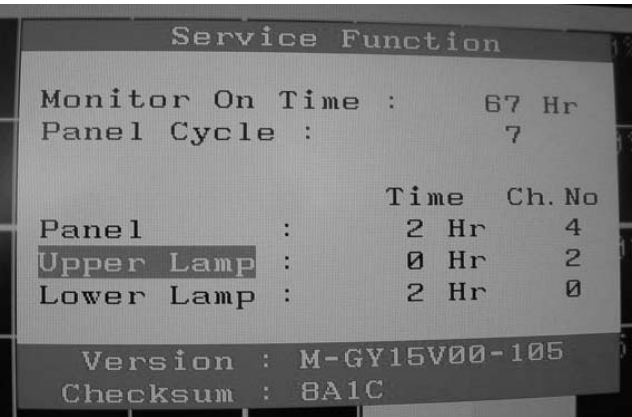
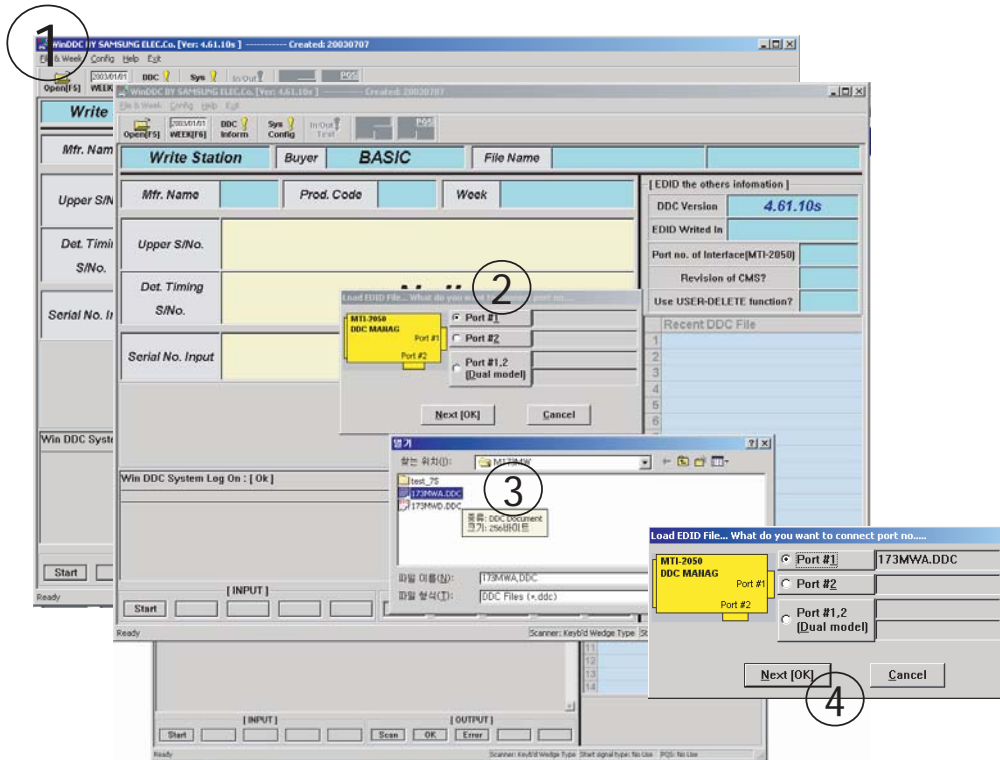


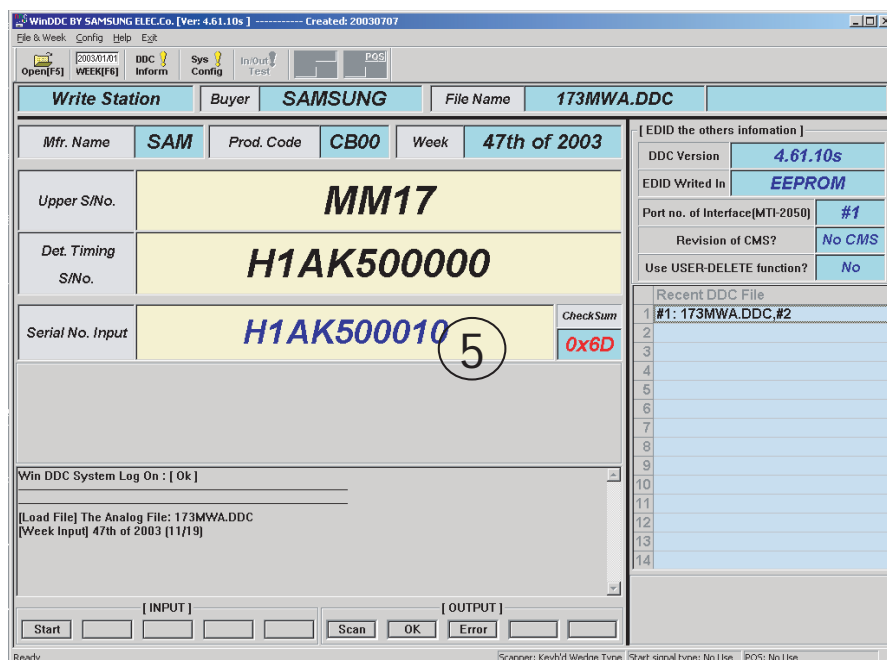
Figure 5, 6.

### 3 Alignments and Adjustments

#### 3-7 How to execute DDC



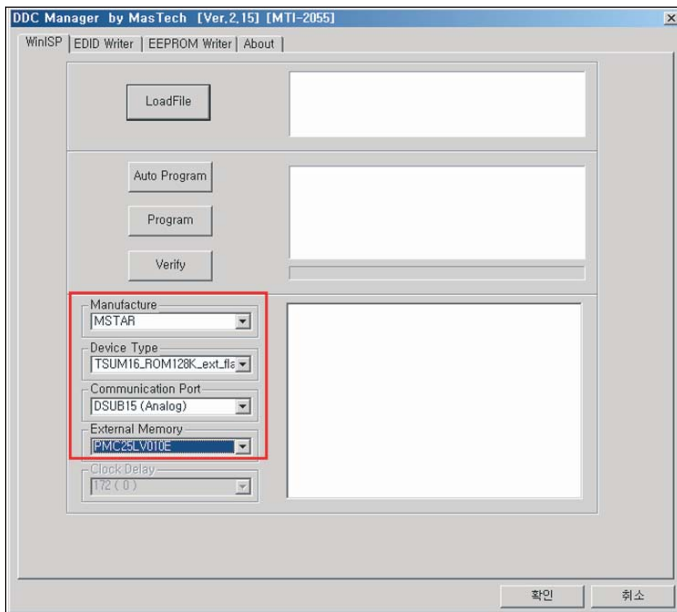
1. Open file.
2. Select Port #1.
3. Select DDC file.
4. Click, "Next" Button



5. Type in the monitor serial number and press Enter.
- \*Repeat this step 2 to 5 times in digital inputs after the analog input.

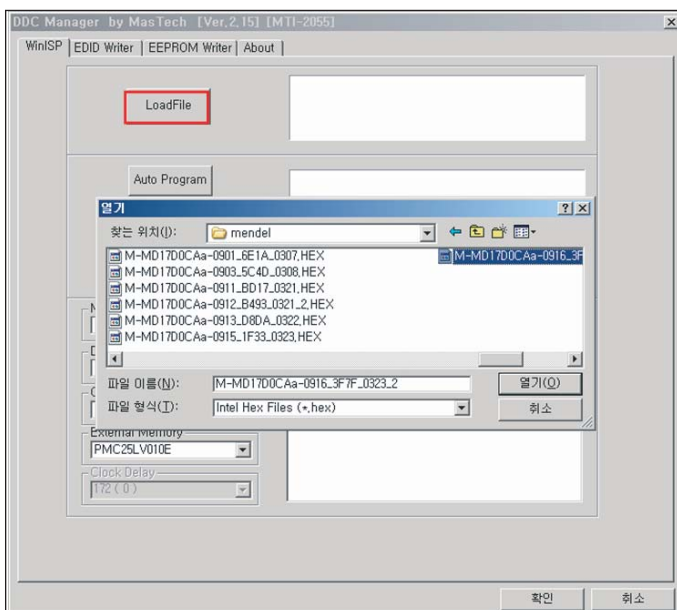
## 3-8 How to execute MCU Code

### 3-8-1 Program Setting - Config Setting



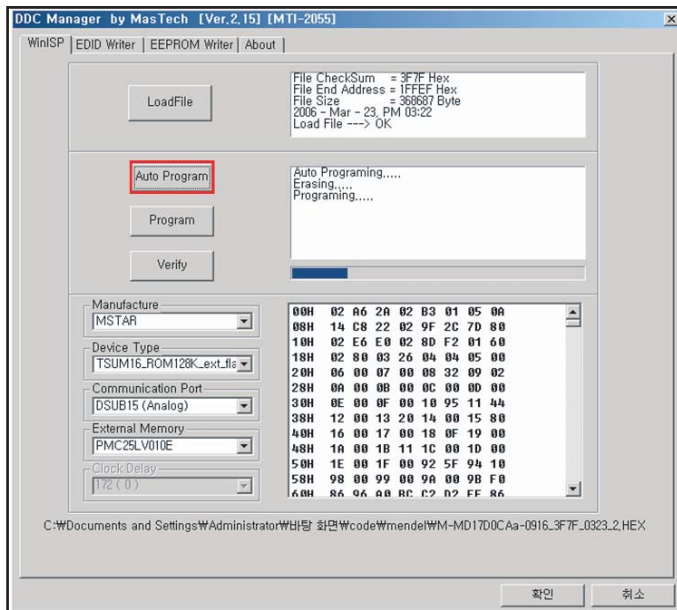
1. Set the options.

- Manufacture : MSTAR
- Device Type :  
TSUM16\_ROM128K\_ext\_flash
- Communication Port : DSUB15 (Analog)
- External Memory : PMC25LV010E

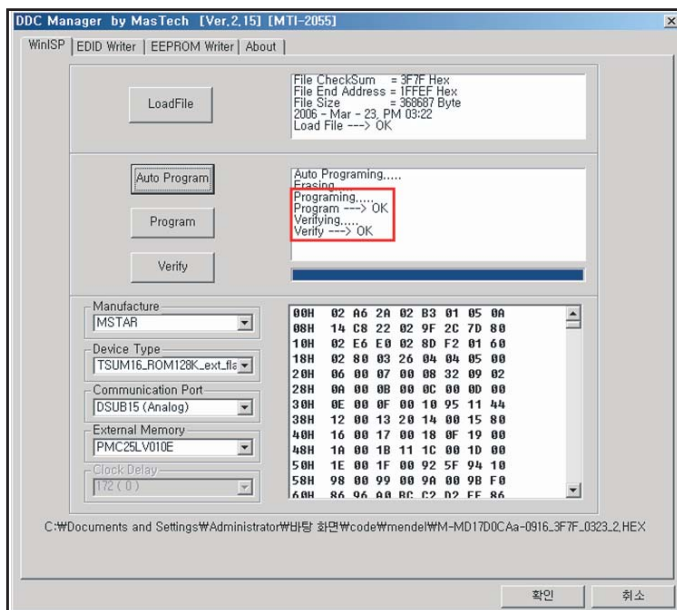


2. Click 'LoadFile' button, and select the MCU code.

### 3 Alignments and Adjustments



3. Click 'Auto Program' button.



4. If Program and Verify is OK, turn off the hard power and than turn on again.